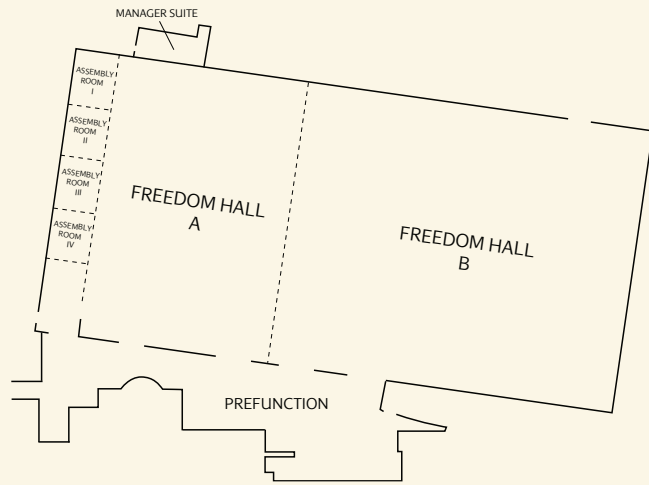
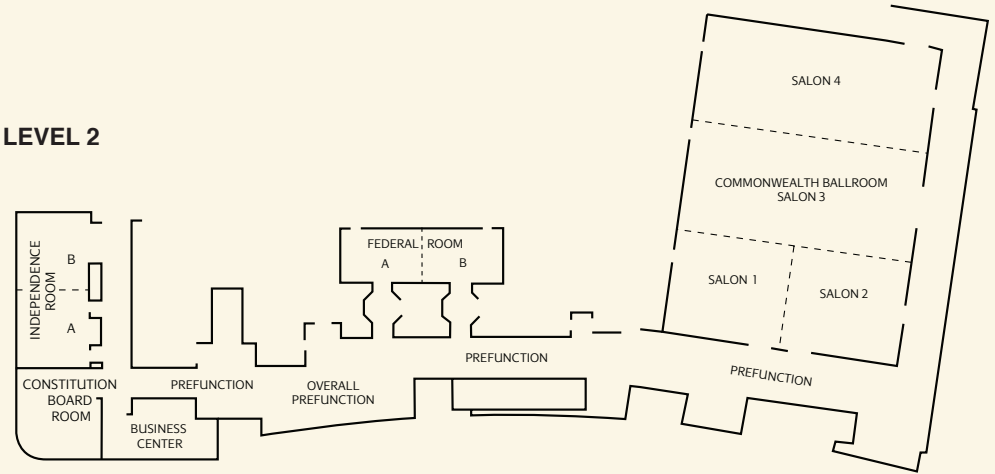


LEVEL 1



Room	Dimensions			Capacity				
	Sq. Ft.	Banquet Rounds	Classroom	Reception	Theatre	U-Shape	Trade-show 8x10	Tradeshow 10x10
LEVEL 1								
Freedom Hall	46,508	3,400	2,050	4,500	7,000	320	290	250
Freedom Hall A	15,553	1,300	1,000	1,800	2,000	190	115	100
Freedom Hall B	27,784	2,000	1,800	2,800	4,500	250	190	153
Assembly Room I	615	36	45	60	88	32	3	3
Assembly Room II	615	36	45	60	88	32	3	3
Assembly Room III	615	36	45	60	88	32	3	3
Assembly Room IV	615	36	45	60	88	32	3	3
Prefunction	7,620	-	-	800	-	-	16	16

LEVEL 2

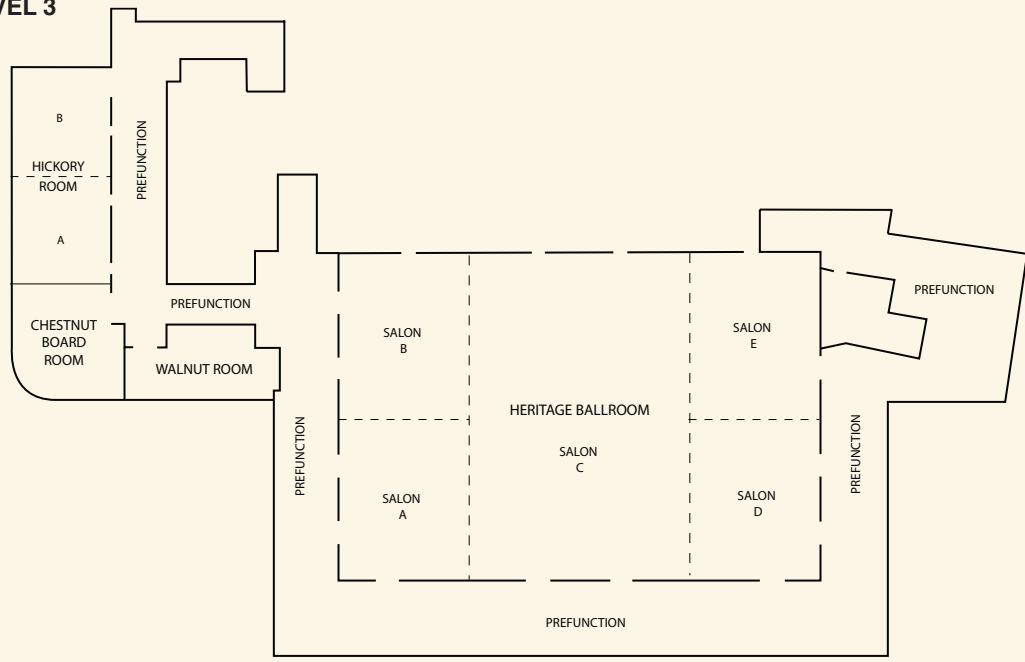


Room	Dimensions			Capacity				
	Sq. Ft.	Banquet Rounds	Class-room	Reception	Theatre	U-Shape	Trade-show 8x10	Tradeshow 10x10
LEVEL 2								
Commonwealth Ballroom	8,724	612	500	900	1,100	137	56	45
Commonwealth Salon 4	2,787	204	132	275	364	89	15	15
Commonwealth Salon 3	3,045	216	170	300	430	92	21	15
Commonwealth Salon 2	1,384	108	69	140	190	41	8	7
Commonwealth Salon 1	1,508	108	72	140	200	41	9	7
Commonwealth Prefunction 1	1,326	-	-	140	-	-	8	7
Commonwealth Prefunction 2	2,376	-	-	250	-	-	12	12
Independence Room	1,290	96	72	130	180	50	-	-
Independence B	635	36	36	60	85	26	-	-
Independence A	655	48	36	60	85	26	-	-
Constitution Boardroom	660	-	-	-	-	16	-	-
Federal Room	1,017	72	54	110	142	50	-	-
Federal Room A	509	36	24	50	70	26	-	-
Federal Room B	660	36	24	50	70	26	-	-
Boardroom Prefunction	1,048	-	-	75	-	-	-	-

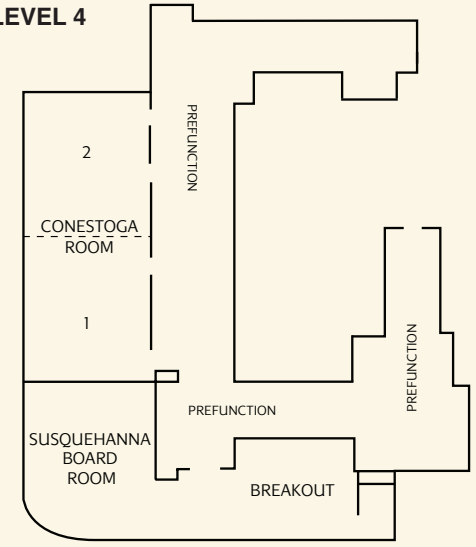


LEVEL 3

3 East Vine Street, Lancaster, Pennsylvania 17602
 866.503.3786 • Fax 717.207.4028 • www.lancasterconventioncenter.com



LEVEL 4



Room	Dimensions			Capacity				
	Sq. Ft.	Banquet Rounds	Classroom	Reception	Theatre	U-Shape	Trade-show 8x10	Trade-show 10x10
LEVEL 3								
Heritage Ballroom	9,696	720	588	1,000	1,400	146	60	50
Heritage Ballroom A	1,298	96	72	140	155	41	7	6
Heritage Ballroom B	1,298	96	72	140	155	41	7	6
Heritage Ballroom C	4,504	288	264	450	650	100	28	21
Heritage Ballroom D	1,298	96	72	140	155	41	7	6
Heritage Ballroom E	1,298	96	72	140	155	41	7	6
Heritage Ballroom Prefunction	4,325	-	-	430	-	-	19	9
Hickory Room	1,290	96	72	140	180	50	-	-
Hickory Room A	635	36	36	60	85	26	-	-
Hickory Room B	655	48	36	60	72	26	-	-
Chestnut Boardroom	660	-	-	-	-	20	-	-
Walnut Room	542	36	18	50	48	12	-	-

Room	Dimensions			Capacity				
	Sq. Ft.	Banquet Rounds	Class-room	Reception	Theatre	U-Shape	Trade-show 8x10	Trade-show 10x10
LEVEL 4								
Conestoga Room	1,290	96	72	140	180	50	-	-
Conestoga Room 1	655	48	36	60	85	26	-	-
Conestoga Room 2	635	36	36	60	85	26	-	-
Susquehanna Boardroom w/Breakout	660/1,150	-	-	-	-	14	-	-

